



—
Shape
What's next...

—
**Accommodation
Guide**

Welcome

For some, moving away from home to study is an exciting time in life, for others it can be a little daunting. For parents and guardians, it's a time of change and reassurance that their child's future living arrangements are suitable and safe whilst studying.

Whatever the situation, rest assured RMIT is here to support you all the way. This guide is aimed at domestic prospective students, parents and guardians to help explain some of the accommodation options available to RMIT students, useful information for getting around Melbourne and answer common questions along the way.

This guide may serve as a general guide for others, and has been prepared in accordance with Australian law.

Note: no costs are included in this guide. Please refer to Accommodation provider website for further information.

Need help with housing?

A wide range of housing support services are available to RMIT students, further information can be found here:

rmit.edu.au/accommodation

If you still have further questions after reading this guide, refer to the relevant contact details listed within the pages. Alternatively you can touch with our friendly staff at Study@RMIT.

[03 9925 2260](tel:0399252260)

rmit.edu.au/contact-us

Content

Moving to Melbourne	3
Accommodation options	4
▪ Short stay	
▪ Long stay	
Purpose-Built Student Accommodation (PBSA)	
▪ Atira	6
▪ Campus Living Villages	8
▪ dwell Village Melbourne City	10
▪ Iglu Student Accommodation	12
▪ Journal Student Living	14
▪ Scape Living	16
▪ The Student Housing Company	18
▪ UniLodge	20
▪ Urbanest Student Accommodation	22
Transport information	24
▪ City campus	
▪ Brunswick campus	
▪ Bundoora campus	
Cost of living	26
Things to consider	27

Moving to Melbourne

Melbourne is the capital city of Victoria and Australia's second largest city. It is renowned for its passion for food, creative arts, design, sports, and festivals.

It is also one of the world's most diverse cities. It benefits from the influences of more than 230 different nationalities, and almost half of its residents were born overseas. The welcoming atmosphere will help you feel at home.

Melbourne is also safe, well-designed and easy to get around on foot, bike, or public transport



Melbourne – Most livable city

For seven years in a row, Melbourne was voted the world's most livable city. Explore and study in Melbourne: its charm, creative energy and welcoming atmosphere will captivate you.

rmit.edu.au/about/moving-to-melbourne

New to Melbourne

If you are new to Melbourne we recommend that you arrive at least two to three weeks before the start of classes to give you time to arrange short-stay or long term accommodation.

You can also meet with an RMIT Student Support Advisor at RMIT Connect for advice on researching and inspecting properties, so you can find long term accommodation.

rmit.service-now.com/connect/

Moving in

There's a lot to think about when moving into new accommodation, some forward planning will ensure a smoother transition.

Moving out

When moving out of your accommodation it is important to plan your moving date according to your lease agreement and submit your intention to move out in writing.

Lifestyle and culture

Explore everything Melbourne has to offer: museums and galleries, comedy and theatre, a thriving dining scene, nightlife, and plenty more.

Accommodation options

Short-stay accommodation

Short-stay or temporary accommodation is a place to stay while you become familiar with your new surroundings. This gives you some time to find more suitable long-term accommodation while studying. You could stay at a hostel or hotel close to your campus.

If you have friends or family in Melbourne, you might be able to stay with them while you look for more permanent accommodation and allow yourself time to get to know your surroundings.

Long-stay accommodation

When choosing long term accommodation consider your requirements and proximity to campus.

Homestay

Homestay or "full board" accommodation is when a room is offered within an existing household by a single person, a couple or family.

This option provides a family-like environment with utility costs and meals included. All homestay accommodation is thoroughly screened to ensure it is a suitable living environment for students.

Private rental and shared accommodation

You can rent a house, apartment or studio through a real estate agent or private landlord.



Runu Hann

'There's a real sense of community, living with a PBSA, but you also have time to go off and do your own thing.'

[Find out more about Runu](#)

rmit.edu.au/Runu

The main advantage of shared accommodation is reduced living expenses making it the most popular accommodation choice for students. Most students enjoy the benefit of living with other people and getting to know their community.

Student hostels

Student hostels offer a furnished bedroom with access to shared facilities such as bathrooms, laundry, lounge and recreational facilities.

For more information on Accommodation options:

rmit.edu.au/accommodation

Purpose-built Student Accommodation (PBSA)

RMIT has carefully selected a number of PBSA properties, which meet RMIT's high quality standards.

RMIT's preferred providers of student accommodation provide a supportive and engaging student experience, conveniently located close to campuses and transportation.

These properties typically include:

- a variety of furnished room types (studios, twin share, shared apartments).
- all inclusive rates, which means utilities, high-speed internet/Wi-Fi and other services are covered by the rent.
- secure access to building and room.
- excellent communal facilities.
- clear, transparent rental rates and agreements.
- a respectful, inclusive and safe culture.
- friendly community with strong links to RMIT to support students.

Other benefits to living in one of RMIT's preferred providers include:

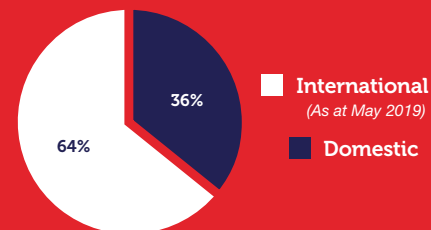
- Living with other students
- Dedicated pastoral care
- Guaranteed 'no offer, no pay' policies
- Free resident activities (cooking competitions, fitness classes, movie nights)
- Indoor and outdoor communal spaces (cinema room, games room, BBQ)
- Designated study spaces

Safe, supportive communities

No matter what time it is, there's always someone to provide support if required. Staff are available 24/7 and are trained in first aid, crisis management and dealing with personal issues.

Who lives in PBSA?

There are approx. 1900 RMIT students who reside in RMIT's preferred PBSA properties.



Purpose-built student accommodation

RMIT's approved preferred provider accommodation options are listed on the following pages and all meet RMIT's high quality standards.

Note: Amenities and facilities may vary with each property. Please refer to contact details for confirmation.

rmit.edu.au/pbsa

Atira



Contact details

Atira La Trobe Street

- 50 La Trobe Street Melbourne
- 1300 848 888
- atira.com/location/la-trobe/

Located down the street from the City campus, offering great city views.

Atira Peel Street

- 247 Peel Street, North Melbourne
- 1300 848 888
- atira.com/location/peel-st/

Provides easy access to North Melbourne's art and culture scene.



Peel Street exterior bld



(La Trobe Street exterior bld)



Twin Share bedroom

Atira Accommodation Support Scholarships

For students who are moving to Melbourne to commence study at RMIT

rmit.edu.au/atirasupportscholarship

Transport access

Trains, trams, buses, and shared bikes.

Stay type

Short and long term (6 and 12 month)

No. of beds

La Trobe Street: 771
Peel Street: 576

Travel time

Atira La Trobe Street

- City campus : 5 minute walk
- Brunswick campus: 30 minute tram

Atira Peel Street

- City campus : 15 minute walk
- Brunswick campus: 20 minute tram

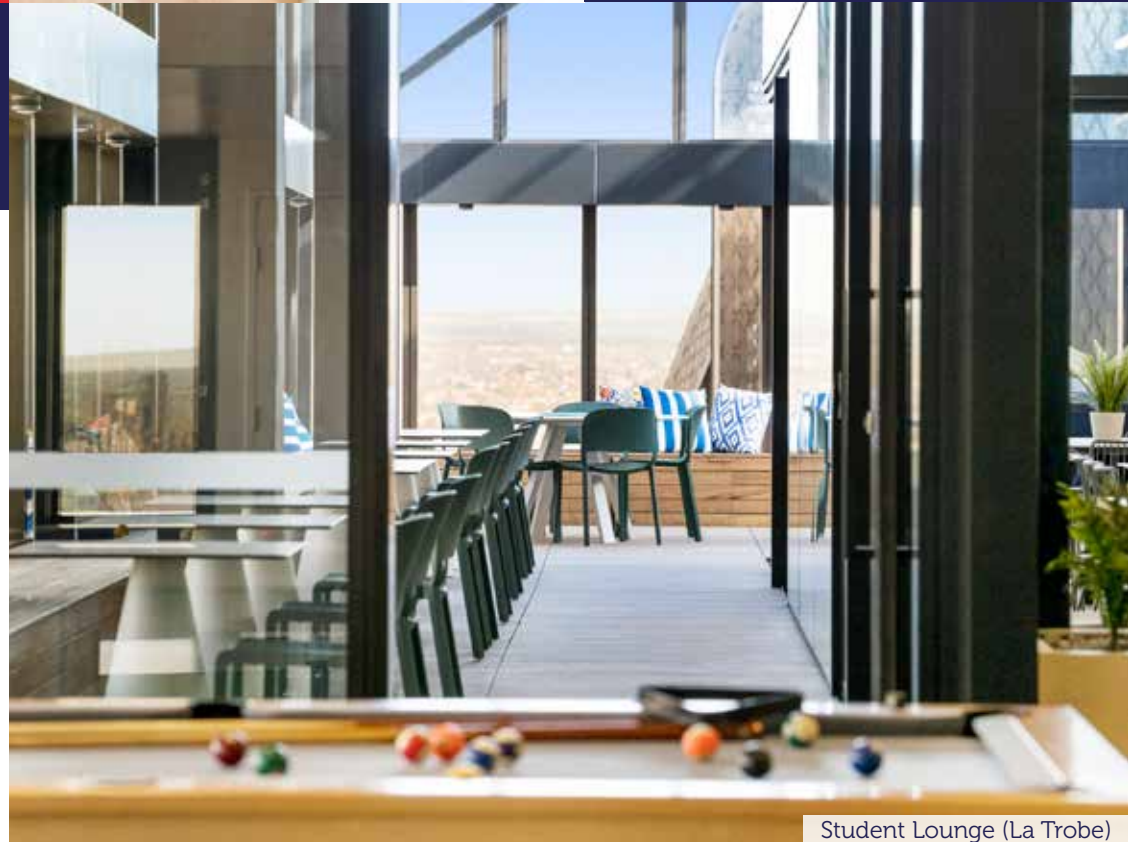
Room type

- Private 1 bed studios
- Twin share rooms
- 2, 3, 4, 5, 6 & 7 bed apartments

Amenities and Facilities

- Private cinemas
- Rooftop lounges
- Comfortable study areas
- Expansive communal kitchens
- Unlimited internet, and free Wi-Fi in all common areas
- Air conditioning with temperature control panel
- State-of-the-art gyms
- Monthly social and cultural activities
- Swipe card room access with individual locking rooms
- Openable windows providing light with retractable blinds

Note: Amenities and facilities may vary with each property.



Student Lounge (La Trobe)



Campus Living Villages

Contact details

Yarra House

- 📍 101 Yarra Bend Road Fairfield
- ☎ 03 8374 6957
- ✉ live@yarrahouse.com.au
- 🌐 mystudentvillage.com/au/yarra-house

Located on Melbourne Polytechnic's Fairfield campus, heritage listed Yarra House is surrounded by parklands with the city down the road.

Half kitchen

Recreation room



Communal lounge and games room

Transport access

Trains, trams, buses, and shared bikes.

Stay type

Flexible short and long term (6 and 12 month)

No. of beds

153

Travel time

- City campus: 40 minute bus
- Brunswick campus: 20 minute drive
- Bundoora campus: 30 minute bus

Room type

- 1 bed single room (standard/deluxe) (ensuite or shared facilities)
- Twin share rooms (ensuite)
- Cottage single room (shared facilities)
- Disabled Facilities Room (ensuite)

Amenities and Facilities

- Fully inclusive rates, with unlimited WiFi and free on-site parking
- BBQ areas with tables and chairs
- Study areas for group and private sessions
- Gym facilities, pool tables, table tennis and games
- 24/7 Communal cooking facilities
- 24/7 Coin-operated laundry
- Student lounge with widescreen tv and Foxtel
- Reverse cycle air conditioning with temperature control panel in all rooms
- Interactive Residental Life and Support Program
- 24/7 security and an onsite live-in manager

dwell Village Melbourne City

Contact details

dwell Village Melbourne City

-  5-17 Flemington Road, North Melbourne
-  03 8330 2000
-  dwellstudent.com.au/melbourne

dwell Village Melbourne City is centred around a courtyard and garden area that features a swimming pool and bbq.



Student Hub



1 bedroom studio premium



Heated pool

dwell Village Melbourne City Accommodation Support Scholarship

For students who are moving to Melbourne to commence study at RMIT.

rmit.edu.au/rmitvillagesupportscholarship

Transport access

Trams, buses, and shared bikes.

Stay type

6 and 12 months
(flexible contracts available)

No. of beds

616

Travel time

- City campus: 15 minute walk
- Brunswick campus: 20 minute tram

Room type

- 1 bedroom
- 1 bedroom suite
- 1 bedroom studios (Deluxe/Premium/ Disabled access available)
- 2 bedroom studio (with/without balcony) (with shared facilities)
- 2, 3, 4, 5 bedroom (with/without balcony) (with shared facilities)

Amenities and Facilities

- 24-hour security and support
- Heated outdoor pool
- Outdoor Lounge and BBQ deck with tables and chairs
- Study areas for group and private sessions
- Gym facilities
- Music room and games room with pool table, table tennis and foosball tables (brand new)
- Indoor cinema with Foxtel
- 24/7 Communal cooking facilities (brand new)
- 24/7 Cashless laundry
- Swipe card room access with individual locking rooms



4/5 bedroom deluxe common area



Outdoor courtyard



Communal lounge with gaming console and fireplace



Iglu Student Accommodation

Contact details

Iglu Melbourne City

- 📍 229 Franklin Street, Melbourne
- ☎ 03 9002 5600
- 🌐 iglu.com.au/rmit

Iglu offers cool student living in the heart of Melbourne city – with RMIT, shopping, restaurants and nightlife right on your doorstep.

Iglu Accommodation Support Scholarships

For students moving to Melbourne to commence study at RMIT.

rmit.edu.au/igluscholarship



Shared apartment bedroom

Transport access

Trains, trams, buses, and shared bikes

Stay type

Short and long term (6 and 12 month)

No. of beds

594



Studio apartment

Travel time

- City campus: 4 minute bike, 8 minute walk
- Brunswick campus: 15 minute bike, 20 minute tram or 30 minute train

Room type

- Premium studio apartment
- Standard studio apartment
- 5 bedroom shared apartment
- 6 bedroom shared apartment

Amenities and Facilities

- Fully furnished apartments with air conditioning
- Free high-speed unlimited Wi-Fi
- 24/7 security and staff support
- Free weekday breakfast
- Regular social events
- Range of study spaces, library den and media room
- State of the art gym and exercise area
- Two outdoor courtyards
- A range of communal areas with fireplace, gaming console, kitchen, BBQ, table tennis, pool table and fireplace
- Onsite laundry facilities
- Bicycle storage area

Journal Student Living



Contact details

Journal Uni Place

- 📍 18 Leicester Street, Carlton
- ☎ 03 9001 0694
- 🌐 journalstudentliving.com.au

Journal offers bigger social spaces, sophisticated design, lush gardens in an excellent location, next to RMIT, Queen Victoria Market and the city.



BBQ rooftop terrace



Journal Central (opening 2020)

Transport access

Trams, buses, and shared bikes.

Stay type

Short and long term (6 months and 12 months)

No. of beds

804



Journal Central studio room

Journal Accommodation Support Scholarships

For students moving to Melbourne to commence study at RMIT.

rmit.edu.au/journalsupportscholarship

Travel time

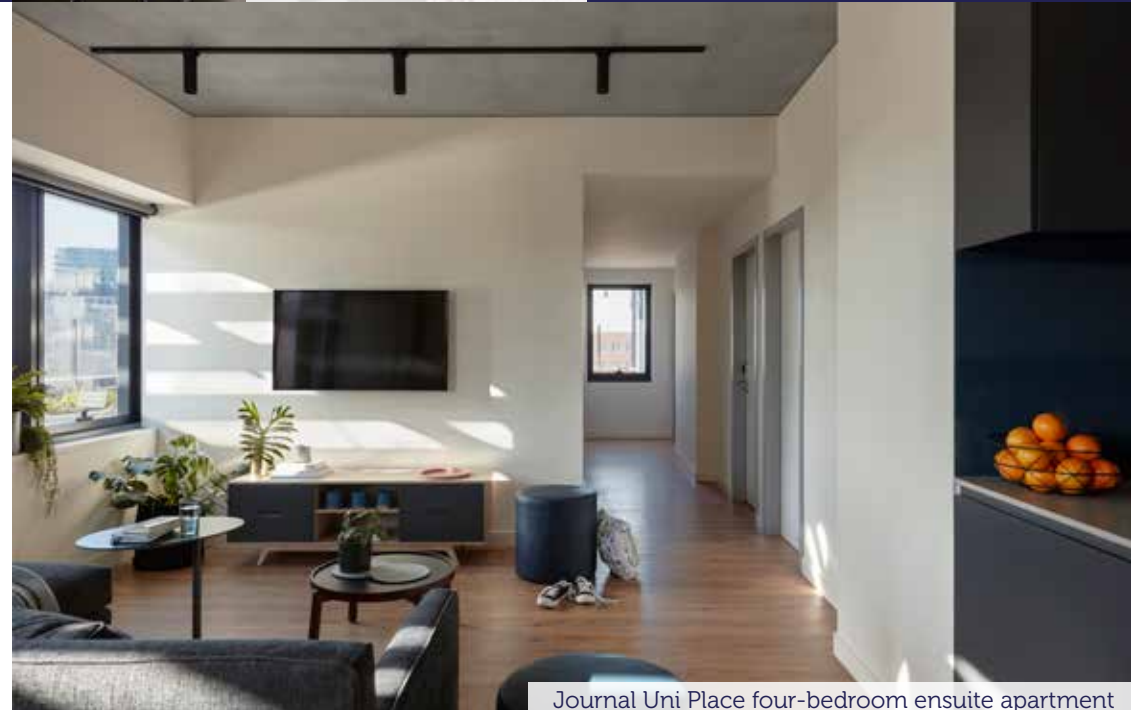
- City campus: 5 minute walk
- Brunswick campus: 20 minute tram

Room type

- 1 bedroom studios
- Twin share studios
- 2 bedroom apartments
- 3, 4 and 6 bedroom ensuite apartments

Amenities and Facilities

- 24/7 security and reception
- High-speed unlimited internet
- Facility app
- On-site café
- Huge study zones and cosy libraries
- Rooftop terraces and gardens
- Games room and cinema
- Communal lounge and kitchen
- Gym and laundry
- All-inclusive weekly fee includes rent, internet, utilities and social events



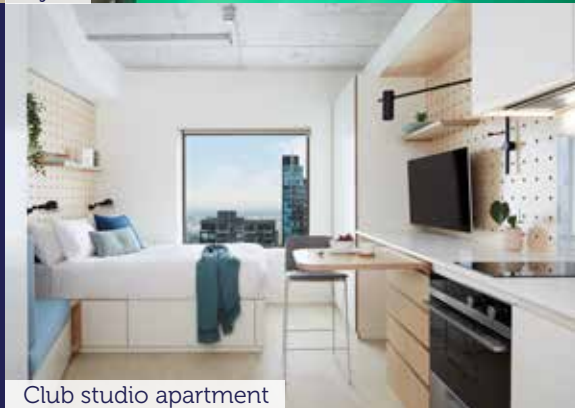
Journal Uni Place four-bedroom ensuite apartment



Communal kitchen



Gym



Club studio apartment

Two new locations

Scape Carlton
opening Semester 1 2021

Scape Franklin
opening Semester 2 2021



Studio Apartment

Scape Living



Contact details

Scape Swanston

📍 5 La Trobe Street, Melbourne

☎ 03 9977 8088

🌐 scape.com/en-au/student-accommodation/melbourne/swanston

Roll out of bed and into uni at this student accommodation right across the road from RMIT's City campus.

Transport access

Trams, trains, buses, and shared bikes.

Stay type

Short and long term (6 and 12 month)

No. of beds

754

Travel time

- City campus: 2 minute walk
- Brunswick campus: 25 minute tram or train

Room type

- Studio apartments with kitchenette and private en-suite
- Twin share studio apartment with kitchenette and private ensuite

Amenities and Facilities

- 24/7 trained professional Scape concierge and security
- Fully furnished apartments
- 24-hour wellbeing support
- Large communal lounge, study, cinema and kitchen spaces
- 24/7 fitness centre
- High-speed unlimited internet, and free Wi-Fi throughout the building
- Full lifestyle and events program
- Scape x Sonder national safety app
- All utilities including in one weekly price
- Career and networking opportunities and workshops

The Student Housing Company



Travel time

Infinity Place

- City campus: 10 minute walk
- Brunswick campus: 20 minute tram

Park Avenue

- City campus: 15 minute tram
- Brunswick campus: 15 minute tram

University Square

- City campus: 10 minute walk
- Brunswick campus: 20 minute tram

Room type

- Self contained double bed studios
- 1 bedroom apartment
- Twin studio
- 2, 3, 4 and 6 bedroom shared apartments
- Single co-living

Transport access

Trams, buses, and bike storage

Stay type

Short and long term (6 and 12 month)

No. of beds

Infinity Place: 335
Park Avenue: 369
University Square: 345

Contact details

Infinity Place

- 📍 145 Berkeley Street, Melbourne
- ☎ 03 9052 3202
- 🌐 [thestudenthousingcompany.com.au/locations/melbourne/infinity-place/](https://www.thestudenthousingcompany.com.au/locations/melbourne/infinity-place/)

Infinity Place features premium, spacious accommodation, most rooms with balconies surrounded by cafes, food and entertainment.

Park Avenue

- 📍 8 Leonard Street, Parkville
- ☎ 03 9966 5420
- 🌐 [thestudenthousingcompany.com.au/locations/melbourne/park-ave/](https://www.thestudenthousingcompany.com.au/locations/melbourne/park-ave/)

Surrounded by parklands on Royal Parade, Park Avenue provides an oasis away from the hustle and bussle of the CBD. Park Avenue is a quick tram ride away from classes.

University Square

- 📍 85 Barry Street, Carlton
- ☎ 03 9918 3910
- 🌐 [thestudenthousingcompany.com.au/locations/melbourne/university-square/](https://www.thestudenthousingcompany.com.au/locations/melbourne/university-square/)

University Square is surrounded by cafes, food and entertainment. Great natural light and outlook across the park of University Square are highlights at this property.



Exec studio bedroom (Infinity Place)



Studio bedroom (University Square)

Amenities and Facilities

- 24-hour customer service and wellbeing support
- Smart tv in each apartment
- Games area and cinema room
- Premium kitchen appliances in rooms including dishwasher
- Communal kitchen/dining
- Gymnasium
- Rooftop terrace BBQ
- Dedicated study areas
- On-site laundry
- Split system heating and cooling in all apartments

Note: Amenities and facilities may vary with each property.



Exterior (Park Ave)



UniLodge @ RMIT Bundoora – Walert House



UniLodge @ RMIT Bundoora – Walert House



UniLodge @ RMIT Bundoora – Walert House

UniLodge @ RMIT Bundoora – Walert House Accommodation Scholarship

For students moving to Melbourne to commence study at RMIT.
rmit.edu.au/unilodgebundoorawalert/housescholarship

Cedar Pacific Indigenous Accommodation Scholarship – RMIT University

The RMIT Indigenous student accommodation scholarship will provide a subsidy in UniLodge Royal Melbourne in a single studio.
rmit.edu.au/cedarpacificscholarship



UniLodge Royal Melbourne



UniLodge

Contact details

UniLodge @ RMIT Bundoora – Walert House

- 📍 345 McKimmies Road, Bundoora
- ☎ 03 9998 8400
- 🌐 unilodge.com.au

Located on RMIT Bundoora campus West, it's a short walk to class and within easy reach to shops, cafes and public transport links.

UniLodge Royal Melbourne

- 📍 15 Wreckyn Street, North Melbourne
- ☎ 03 9113 8300
- 🌐 unilodge.com.au

UniLodge Royal Melbourne is a low-rise apartment complex with a close residential community.

Transport access

Trams, buses, trains

Stay type

Short and long term
(6 and 12 month)

No. of beds

UniLodge @ RMIT Bundoora – Walert House: 367
UniLodge Royal Melbourne: 411

Travel time

UniLodge @ RMIT Bundoora – Walert House

- Bundoora campus West: 2 minute walk
- Bundoora campus East: 14 minute walk or take the free courtesy bus:
rmit.edu.au/bundoorabus

UniLodge Royal Melbourne

- City campus: 15 minute walk
- Brunswick campus: 15 minute tram

Room type

- **UniLodge @ RMIT Bundoora – Walert House:** Studio, studio large, 3 and 4 bedroom multi-share apartments
- **UniLodge Royal Melbourne:** Studio and 5 bedroom multi-share apartments

Amenities and Facilities

- Spacious study rooms
- Outdoor BBQ area with herb garden
- Communal kitchens
- Pool table and games rooms
- On-site laundry
- Media room and music room
- Outdoor courtyard and rooftop terrace
- Electronic key card access to all areas
- CCTV security monitoring
- Residential Life Program

***Note:** Amenities and facilities may vary with each property.*

Urbanest Student Accommodation



Travel time

Swanston Street

- City campus: 5 minute walk
- Brunswick campus: 30 minute tram

Melbourne Central City campus:

- City campus: 4 minute walk
- Brunswick campus: 25 minute tram

Carlton

- City campus: 10 minute walk
- Brunswick campus: 20 minute tram

Room type

- Twin share studio
- Twin ensuite room in apartment
- Single ensuite room
- Studio with double bed
- One bedroom ensuite apartment

Transport access

Trains, trams, buses.

Stay type

Short and long term
(6 and 12 month)

No. of beds

Swanston Street: 581
Melbourne Central: 462
Carlton: 509

Contact details

Urbanest Swanston Street

- 📍 599 Swanston Street, Carlton
- 🌐 urbanest.com.au/melbourne/swanston-street/

Sleek, smart and bold this property gives you access to all that Melbourne has to offer. With some of the best cafes, parks and shops in the city all within walking distance

Urbanest Melbourne Central

- 📍 316 La Trobe Street, Melbourne
- 🌐 urbanest.com.au/melbourne/melbourne-central/

Located in the heart of CBD, enjoy Melbourne's most famous laneways to uncover an abundance of shopping and dining.

Urbanest Carlton

- 📍 105 Berkeley Street, Carlton
- 🌐 urbanest.com.au/melbourne/carlton/

Benefit from this friendly community and enjoy some of the best coffee and food in the city from neighbouring cafes.

General enquiries

- ☎ 1800 260 801
- ✉ enquiries@urbanest.com.au



Gym – Melbourne Central



Student common area – Carlton

Amenities and Facilities

- Gym
- Air conditioning and heating in rooms
- Contents insurance
- 24/7 onsite team
- Swipe key access and CCTV
- BBQ and common areas
- Study rooms
- Laundry
- Unlimited Internet Access
- Cinema room/gaming room

Note: Amenities and facilities may vary with each property.



Twin Share – Swanston St



Double Studio with Terrace

Transport Information

Getting around on public transport is easy and convenient with your Myki card. A network of trams, trains and buses can take you where you need to go.

rmit.edu.au/about/moving-to-melbourne/public-transport



Bundoora campus

Bundoora campus West and Bundoora campus East are located approximately 20 kilometres north-east of Melbourne's central business district.

There is student accommodation available on-campus at Bundoora, known as Walert House.

unilodge.com.au/student-accommodation-melbourne/rmit-bundoora

General, paid car parking is available on both campuses for students.

rmit.edu.au/bundoora

Free Courtesy bus

There's a free bus service for students that travels around Bundoora campus and the surrounding areas until late at night.

rmit.edu.au/bundoorabus



Brunswick campus

Brunswick campus is located in Dawson Street, Brunswick and is situated approximately 5 kilometres north of Melbourne's Central Business District.

Suburbs less than 3km to Brunswick campus are approximately 5-15 minutes travel by tram.

Suburbs less than 5km to Brunswick campus are approximately 15-25 minutes by train or tram.

rmit.edu.au/brunswick



City campus

Situated over a six block area of roughly 720,000 m², the City campus is located in the city centre of Melbourne.

Suburbs less than 3km to City campus are either within short walking distance or at most 10-15 minutes travel by tram.

Suburbs less than 7km to City campus are approximately 15-25 minutes on public transport.

rmit.edu.au/city



Suburbs less than 3km to Bundoora campus are either within short walking or riding distance, or quick bus or tram ride.

Suburbs less than 8km to Bundoora campus are 15-30 minutes travel on public transport.

Suburbs less than 12km to Bundoora campus are approximately 20-35 minutes on public transport.

Where to live around Melbourne

For a full list of surrounding suburbs, train stations and tram lines near RMIT campuses and Point Cook, Hamilton, Bendigo sites refer to:

rmit.edu.au/melbourneliving

Cost of living

You will have new and ongoing expenses during your time in Melbourne. Knowing the average living cost will help you prepare for life here and develop a suitable budget for day to day expenses.

rmit.edu.au/costofliving

Cost of living calculator

To help you discover how much it would cost to have the lifestyle you choose in Melbourne, try this Cost of Living Calculator.

insiderguides.com.au/cost-of-living-calculator/

Managing your money

Find out where to go for financial support. Also learn about how to manage everything to do with money, from income, to budgeting, to managing debt.

rmit.edu.au/finances

Take a tour before you decide

Accommodation providers run tours of student accommodation rooms and facilities. Also check out their website, as some have online tours of rooms and facilities.

Earning money

Jobs on Campus gives you the opportunity to gain paid part-time, or casual work employment on campus. The program advertises over 500 employment opportunities for RMIT students each year.

rmit.edu.au/jobsoncampus

RMIT Accommodation scholarships

Consider applying for an accommodation scholarship which could provide you with financial assistance.

rmit.edu.au/courseworkscholarships

Things to consider

- Which RMIT campus or site will I be studying at?
- How much can I afford for rent?
- What type of accommodation suits me?
- How close is it to my RMIT campus?
- How do I plan to travel to campus?
- How close is it to public transport?
- What is nearby, shops, cafes, medical assistance, parks, police station?
- Is it noisy?
- What facilities and amenities are available to me?
- When do my classes start to ensure I can be settle in?
- What if I'm not made an offer to RMIT, can I get a refund?
- What are the costs for the different rooms?
- Do I have a safety plan for travelling to and from the accommodation at night?
- When do I need to look for accommodation?
- When do I need to pay by?





Need help with housing?

A wide range of housing support services are available to RMIT students, further information can be found here:

 rmit.edu.au/accommodation

If you still have further questions after reading this guide, get in touch with our friendly staff at Study@RMIT.

 **03 9925 2260**

 rmit.edu.au/contact-us



Acknowledgement of country



RMIT University acknowledges the people of the Woi wurrung and Boon wurrung language groups of the eastern Kulin Nations on whose unceded lands we conduct the business of the University. RMIT University respectfully acknowledges their Ancestors and Elders,

past and present. RMIT also acknowledges the Traditional Custodians and their Ancestors of the lands and waters across Australia where we conduct our business.

Disclaimer

This guide may serve as a general guide for others, and has been prepared in accordance with Australian law. Every effort has been made to ensure the information contained in this publication is accurate and current at the date of printing. For the most up-to-date information, please refer to the RMIT University website before considering your accommodation options.
 RMIT University CRICOS Provider Code: 00122A
 RMIT Training Pty Ltd CRICOS Provider Code: 01912G
 RMIT University RTO Code: 3046

This guide is designed for Australian and New Zealand citizens and permanent residents of Australia.

