

Global talent solutions

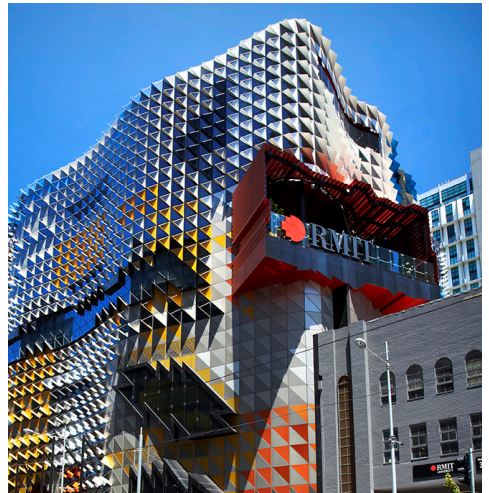
RMIT student internships

RMIT University is a global university of design, technology and enterprise in Australia, with more than 84,000 students and 10,000 amazing teachers and staff.

RMIT's European hub in Barcelona, Spain, is the gateway for European research, industry, government and enterprise to innovation and talent in Australia and Asia.

One of the ways we make global connections is through the placement of around 200 RMIT students a year in 3-12 month internships in Europe.

Our students offer a fresh perspective, fill a short term staffing need, provide mentoring opportunities for existing staff and help to grow and organisation's talent pool.



#2 in Australia and #15 in the world for graduate employment rate¹



14th highest ranked university in Australia and 247th in the world²



#18 in the world and #3 in Australia for universities less than 50 years old³



Top 100 universities in the world for engineering⁴



Our talent pool



Engineering: Aerospace, Chemical, Environmental, Sustainable Systems, Civil and Infrastructure, Biomedical, Computer and Network Engineering, Electrical and Electronic, Electronic Product Design, Telecommunication, Automotive, Mechanical, and Advanced Manufacturing and Mechatronics

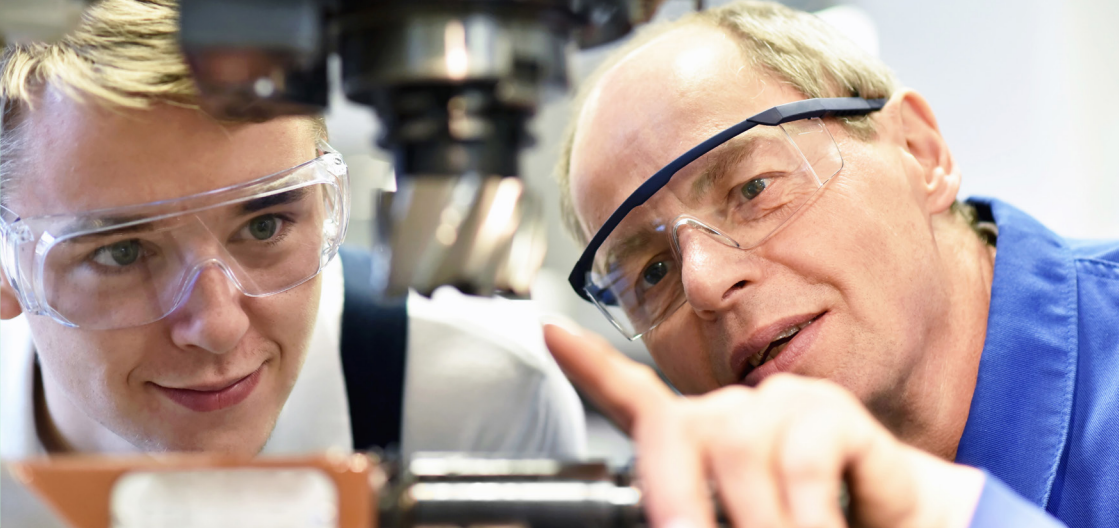
Software engineering, Computer Science and Information and Technology; Industrial Design; Digital Media; Business

¹ 2018 QS Graduate Employability Rankings

² 2017-18 QS World University Rankings

³ 2017-18 QS Top 50 Under 50 Index

⁴ 2018 QS World University Rankings by Subject



How it works

We work with industry partners looking to extend their workforce in Europe through the diversity and depth of international talent.

Our partners highly value RMIT students as interns with over 90% rating our students' abilities as 'excellent'.

How to get involved

We work with you to understand your business needs, including student profile, duration and project type, which could include a work placement or research project.

Who we work with

There are around 165 international companies across 17 countries taking on RMIT students as interns globally, opening up their workplaces and contributing around \$2 million each year in student allowances.

Our partners have included Airbus, EADS, Bentley Motors, the Siemens Group, Nestle, McQuay, Robert Bosch, Volkswagen, BMW, and the Rolls-Royce Group in Europe and North America.



Aditya has been supporting the Systems Engineering (SE) Rolls-Royce Germany team by applying systems engineering thinking to various problems and needs. His professionalism and open mindedness has made him quickly well respected within the global team and he delivered results beyond what was expected.

Christoph Unger
Local Chief of Systems
Engineering
Rolls-Royce Deutschland



Get in touch at global.europe@rmit.edu.au, visit rmit.eu or connect with **RMIT Europe** on social media for all the latest news and updates

